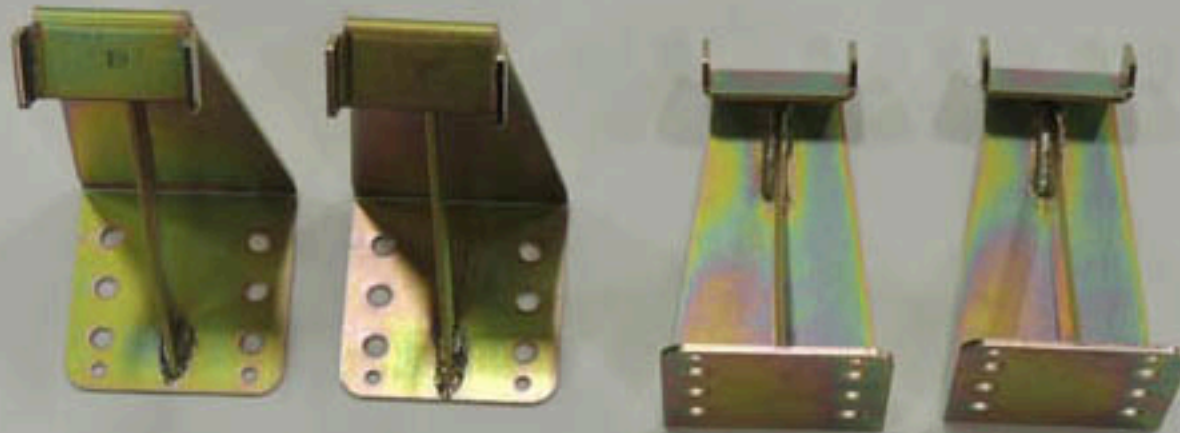


Overhead Door Safety Netting Installation Instructions

Hardware Kit



Eight Mounting Brackets



Eight Pins



32 Washers



Drill Bit



32 5/16 x 1-1/2 Lag Screws



1. Measure and mark the top edge of the highest bracket, as well as the holes that will be drilled, (or welded to metal).



Highest (1st) bracket: 54-inches from floor to top edge of bracket.

Second bracket (from top): 37-inches from floor to top edge of bracket.

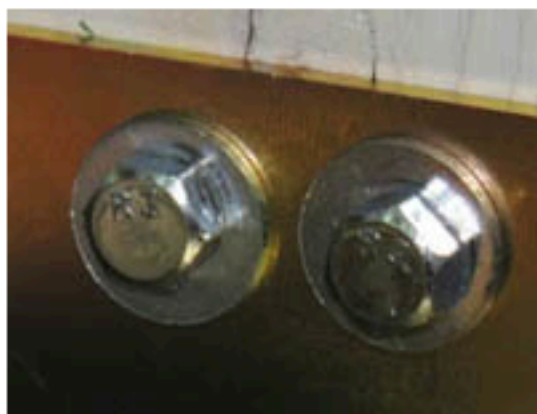
Third bracket: 25-inches from floor to top edge of bracket.

Bottom bracket: 7-1/2 inches from floor to top edge of bracket.

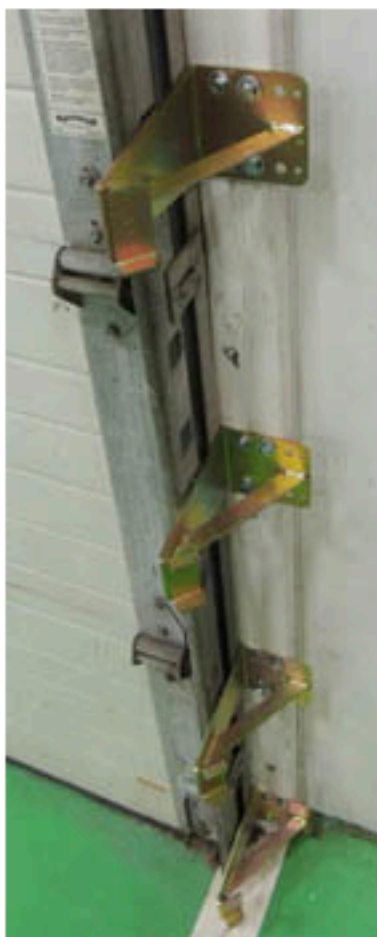
ALL BRACKETS INSIDE EDGE 1/2 INCH FROM DOOR RAIL



2. If drilling into wood, mark pilot holes as shown.



3. Fasten mounting bracket to the wall with provided bolts, or weld mounting bracket to metal rail supports.



All four mounting brackets properly installed and ready to receive net's fastening clip.

Two views of the fastening clips which are sewn into straps on the net.



4. Secure fastening clips to the mounting bracket, four on each side, beginning with the top and working your way down.



5. The final step is to drop in the pin which prevents accidental unhooking.



Properly installed Overhead Door Safety net is now in service!



U.S. Netting, Inc. • 1514 Veshecco Drive • Erie, PA 16501 USA • Phone: (814) 455-9400

Toll Free: 1-800-455-5167 • Fax: (814) 455-9336 • E-mail: sales@usnetting.com