

Installation Instructions For Loading Dock Door Nets With Floor Mounted Bollard

www.usnetting.com

1-800-331-2973



STEP 1
Clean Area



STEP 5
Clean Surface



STEP 2
Measure 3" from
door rail. Be sure
ballard is 1 1/2"
covering door rail
protection



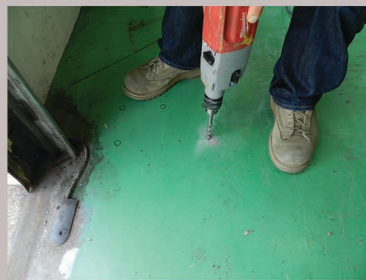
STEP 6
Install bottom base
and fasten with
washers and nuts



STEP 3
Mark 5 Holes
(marker enclosed)



STEP 7
Insert Top Bollard

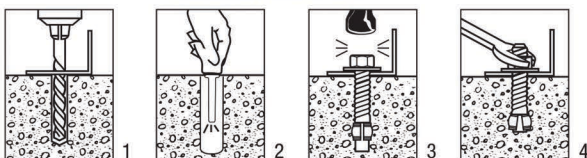


STEP 4
Drill holes 3" deep
(drill bit included)
-Note- Make sure
holes are clean
before insertion

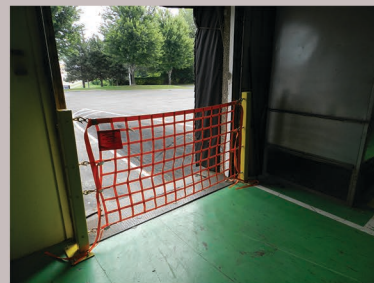


STEP 8
Attach Eyebolt

INSTALLATION STEPS



1. Select a carbide drill bit with a diameter equal to the anchor diameter. Drill hole to any depth exceeding the desired embedment. See chart for minimum recommended embedment.
 2. Clean hole or continue drilling additional depth to accommodate drill fines.
 3. Assemble washer and nut, leaving nut flush with end of anchor to protect threads. Drive anchor through material to be fastened until washer is flush to surface of material.
 4. Expand anchor by tightening nut 3-5 turns past the hand tight position, or to the specified torque requirement.
- NOTE:** Read **Caution** on back page before installation.



STEP 9
Attach Net